



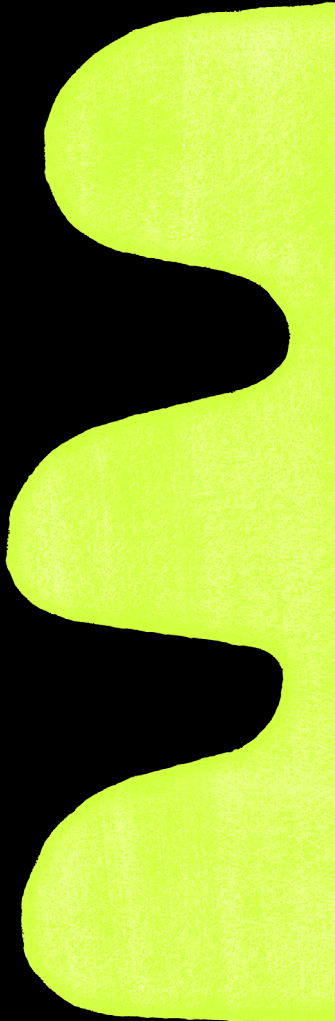
Esitystekniikka Venue Tech

Tavara-asema

**Tavara
asema**

Ratapihankatu 33, 33100 Tampere

www.tavara-asema.fi
@tavaraasematre

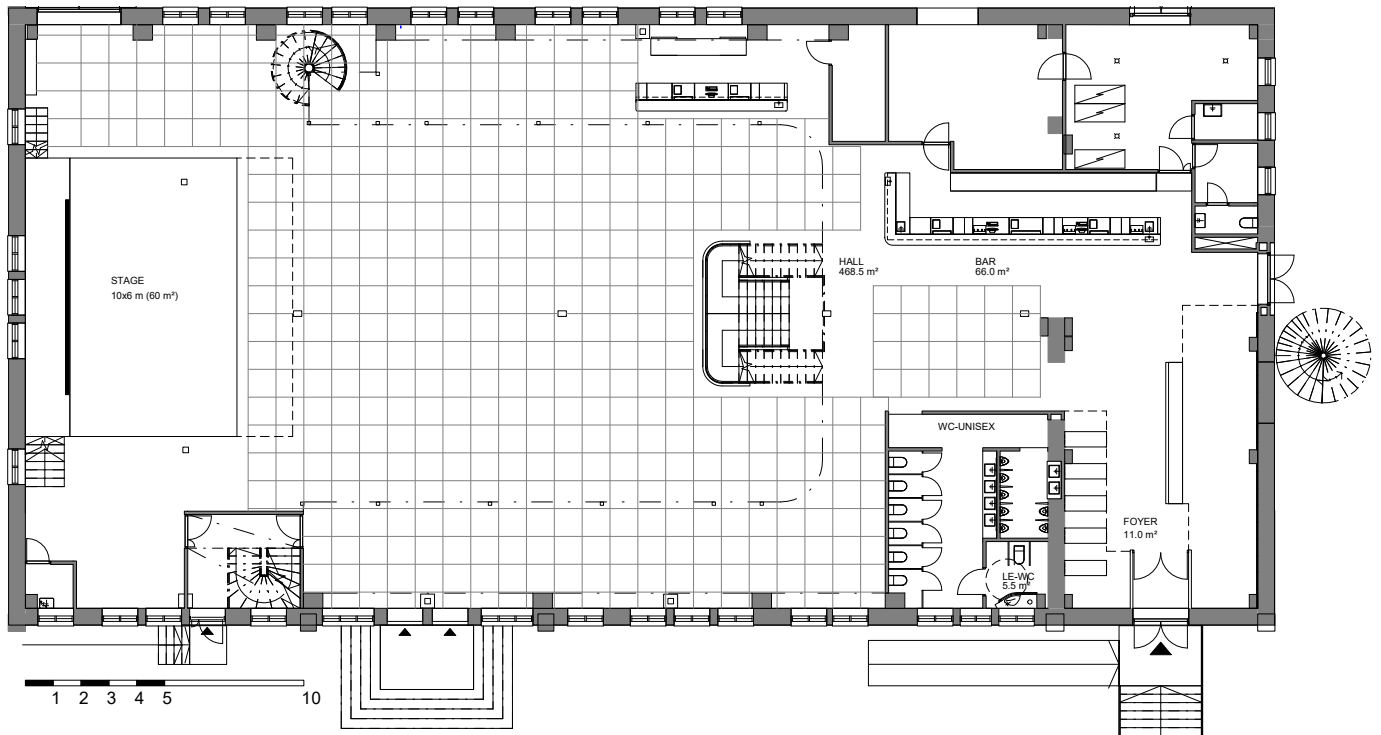


SISÄLTÖ / Contents

Mitat / Measurements	2
Ääni / Audio	3
Valot / Lights	4
Muuta / Other	5
Flown Plot Heads	6
Flown Plot DMX	7
Valot – Lava / Lights – Stage	8
Valot – Sali / Lights – Audience	9

MITAT / Measurements

- Lavan koko: 10 x 6-8 m, korkeus 100 cm / Stage dimensions: 10 x 6-8 m, height 100 cm
- Lastausovet / Loading doors: 2800 x 3400 cm
- Lastauslaiturin korkeus / Loading dock height: +97,5 cm



ÄÄNI / Audio

Saliääni/FOH

- 1x Yamaha CL5
- 1x Yamaha RIO3224-D2
- 5x NEXO GeoM 12
- 4x NEXO RS18
- 4x NEXO ID24-T (front fills)
- 4x NEXO ID24-T (delays)

Lavaääni/Stage audio

- 1x Yamaha CL5
- 1x Yamaha RIO3224-D2
- 8x NEXO P15 (monitor)
- 1x NEXO P15 / side (side fill)
- 2x NEXO L18 / side (side fill)

Signaalinjakelu/ Signal Distribution

- Analog link 48ch
- 8x Cat6A
- 8x fiber, single mode UPC
- 4x fiber, multi mode
- 2x Sonible ml:mio (BNC Madi -> fiber)

Mikrofonit ja DI-boxit/ Microphones & DI boxes

- 8x Shure SM58
- 8x Shure SM57
- 4x audio-technica AE3000
- 1x Audix D6
- 2x Shure Beta52A
- 2x Shure Beta91A
- 4x Sennheiser e614
- 6x Sennheiser e604
- 4x Sennheiser e906
- 4x Radial Engineering ProD2
- 4x Radial Engineering Pro48

- 2x Sennheiser EW-DX e935 handheld microphone
- 2x Sennheiser EW-DX HSP2 headset

VALOT / Lights

Valo-ohjain/Console

1x Chamsys MQ250M Stadium

Verkkoliitännät/Network

2 x Showtec Artnet Node 8/3

Lava/Stage

- 8x Clay Paky Axcor Spot 400
- 12x Chauvet Rogue R2X Wash
- 12x Showtec Stage Blinder 2 Blaze
- 4x Martin Atomic LED

- 8x ADJ FR150Z
- 1x MDG ATMe
- 1 x Unique Hazer

Tanssilattia/ Salin tunnelmavalolaistus

Dance floor/
atmospheric lighting

- 8x FOS Helix Pro
- 8x FOS Scorpio Spot
- 4x Showtec Titan Strobe
- 7x FOS Touring PAR IP HEX

MUUTA / Other

Lavan takana oleva LED-näyttö/Stage LED screen

- Mightary RC Indoor 2.6 mm
- size 5,5 x 3,5 m
- native resolution 2112 x 1344 px
- brightness 900 nits

- 1x Resolume Arena media server
- 1x Blackmagic Design DeckLink Mini Recorder 4K

Ohjelmavalinta ja -reititys/Source selector and routing

- 1x Yamaha MRX7

DJ-laitteet/DJ equipment

- 2 x CDJ2000NXS2
- DJM900NXS2

Kabinetin kokoustekniikka/Cabinet conference tech

- 1x Sony Pro 40 65"
- 2x Genelec 4420A
- 1x BenQ Instashow

Sähkö/Power supply

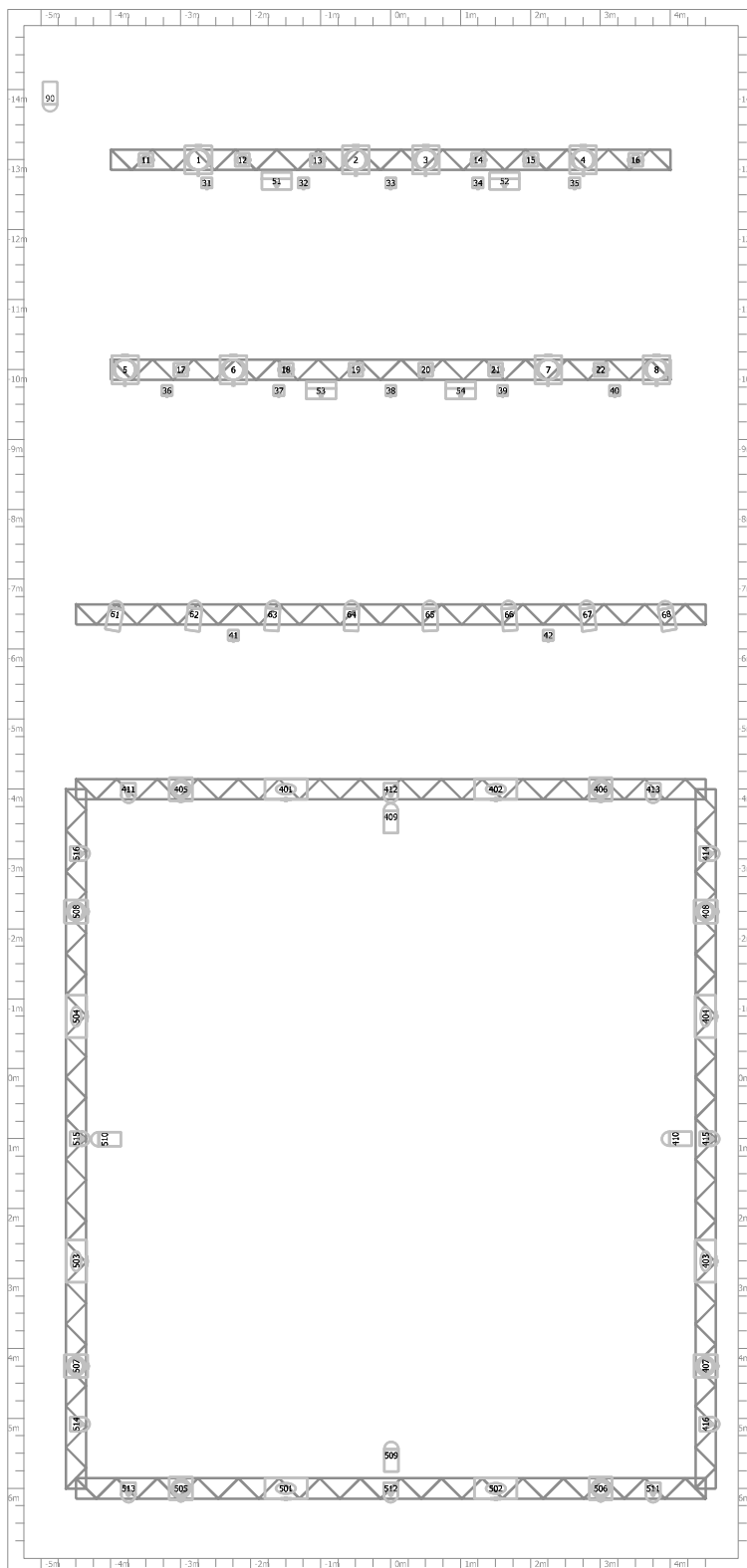
- 2x 63A
- 2x 32A
- 2x 16A
- Additional 4x 16A to the sides of the main floor

Internet

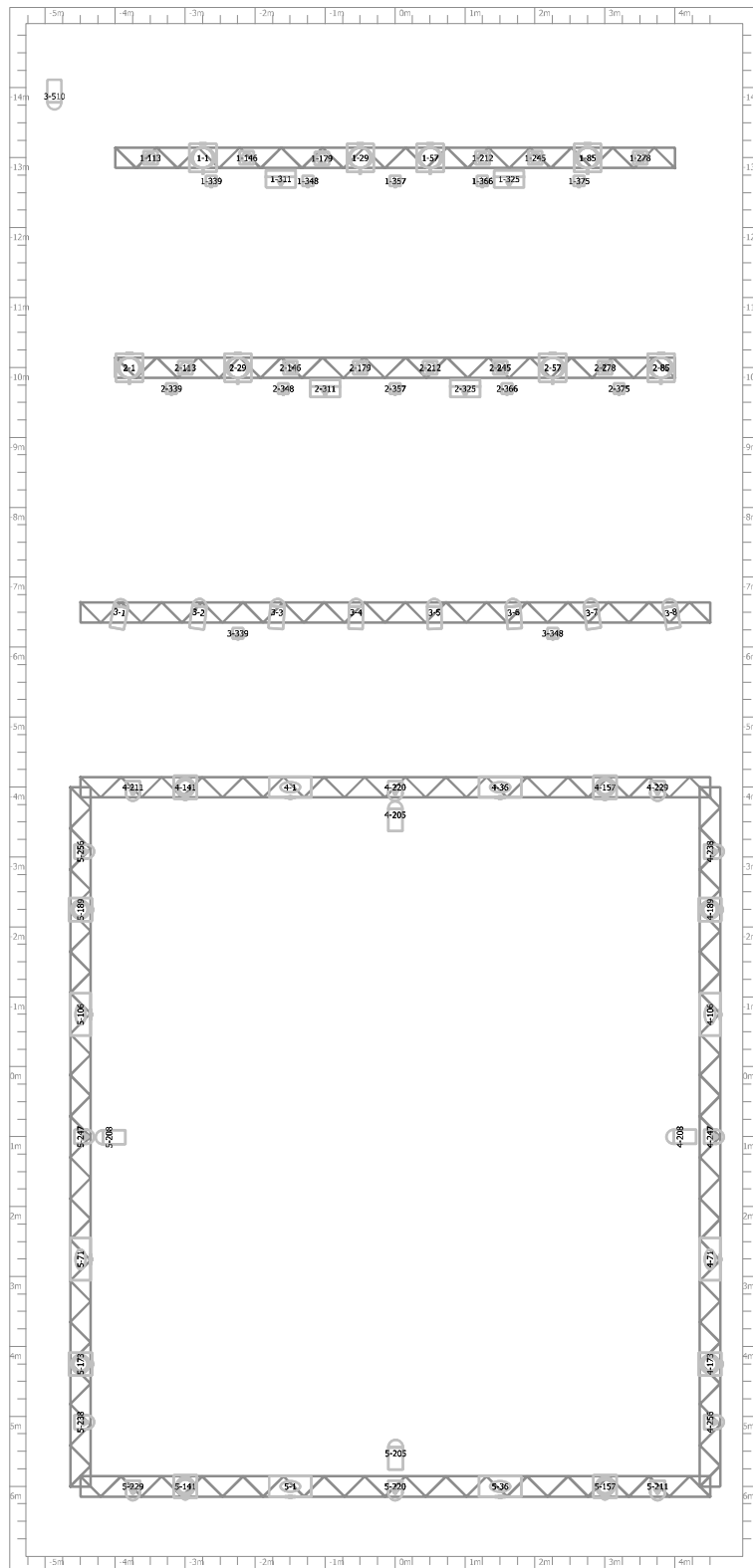
- Optical fiber 1GB/1GB
- Wireless LAN network throughout the building
- Ethernet access available



FLOWN PLOT HEADS



FLOWN PLOT DMX



VALOT - LAVA / Lights - Stage

Location	Artnet	Manufacturer	Head type	CH Mode	UNI	DMX
LX1	0	Chauvet	Rogue RX2 Wash	22	1	001
LX1	0	Chauvet	Rogue RX2 Wash	22	1	023
LX1	0	Chauvet	Rogue RX2 Wash	22	1	045
LX1	0	Chauvet	Rogue RX2 Wash	22	1	067
LX1	0	Chauvet	Rogue RX2 Wash	22	1	089
LX1	0	Chauvet	Rogue RX2 Wash	22	1	111
LX1	0	Clay Paky	Axcor Spot 400	28	1	133
LX1	0	Clay Paky	Axcor Spot 400	28	1	161
LX1	0	Clay Paky	Axcor Spot 400	28	1	189
LX1	0	Clay Paky	Axcor Spot 400	28	1	217
LX1	0	Showtec	StageBlind 2 Blaze	9	1	246
LX1	0	Showtec	StageBlind 2 Blaze	9	1	255
LX1	0	Showtec	StageBlind 2 Blaze	9	1	264
LX1	0	Showtec	StageBlind 2 Blaze	9	1	273
LX1	0	Showtec	StageBlind 2 Blaze	9	1	282
LX1	0	Martin	Atomic LED 3000	14	1	291
LX1	0	Martin	Atomic LED 3000	14	1	305
LX2	1	Chauvet	Rogue RX2 Wash	22	2	001
LX2	1	Chauvet	Rogue RX2 Wash	22	2	023
LX2	1	Chauvet	Rogue RX2 Wash	22	2	045
LX2	1	Chauvet	Rogue RX2 Wash	22	2	067
LX2	1	Chauvet	Rogue RX2 Wash	22	2	089
LX2	1	Chauvet	Rogue RX2 Wash	22	2	111
LX2	1	Clay Paky	Axcor Spot 400	28	2	133
LX2	1	Clay Paky	Axcor Spot 400	28	2	161
LX2	1	Clay Paky	Axcor Spot 400	28	2	189
LX2	1	Clay Paky	Axcor Spot 400	28	2	217
LX2	1	Showtec	StageBlind 2 Blaze	9	2	246
LX2	1	Showtec	StageBlind 2 Blaze	9	2	255
LX2	1	Showtec	StageBlind 2 Blaze	9	2	264
LX2	1	Showtec	StageBlind 2 Blaze	9	2	273
LX2	1	Showtec	StageBlind 2 Blaze	9	2	282
LX2	1	Martin	Atomic LED 3000	14	2	291
LX2	1	Martin	Atomic LED 3000	14	2	305
LX3	2	ADJ	Encore FR150z	1	3	001
LX3	2	ADJ	Encore FR150z	1	3	002
LX3	2	ADJ	Encore FR150z	1	3	003
LX3	2	ADJ	Encore FR150z	1	3	004
LX3	2	ADJ	Encore FR150z	1	3	005
LX3	2	ADJ	Encore FR150z	1	3	006
LX3	2	ADJ	Encore FR150z	1	3	007
LX3	2	ADJ	Encore FR150z	1	3	008
LX3	2	Showtec	StageBlind 2 Blaze	9	3	339
LX3	2	Showtec	StageBlind 2 Blaze	9	3	348
LX3	2	MDG	ATMe	3	3	510

VALOT - SALI / Lights - Audience

Location	Artnet	Manufacturer	Head type	CH Mode	UNI	DMX
Audience	3	FOSTech	Scorpio Spot Vector	16	4	001
Audience	3	FOSTech	Scorpio Spot Vector	16	4	017
Audience	3	FOSTech	Scorpio Spot Vector	16	4	033
Audience	3	FOSTech	Scorpio Spot Vector	16	4	049
Audience	3	FOSTech	Scorpio Spot Vector	16	4	065
Audience	3	FOSTech	Scorpio Spot Vector	16	4	081
Audience	3	FOSTech	Scorpio Spot Vector	16	4	097
Audience	3	FOSTech	Scorpio Spot Vector	16	4	113
Audience	3	FOSTech	TourPar IP Hex	9	4	129
Audience	3	FOSTech	TourPar IP Hex	9	4	138
Audience	3	FOSTech	TourPar IP Hex	9	4	147
Audience	3	FOSTech	TourPar IP Hex	9	4	156
Audience	3	FOSTech	TourPar IP Hex	9	4	165
Audience	3	FOSTech	TourPar IP Hex	9	4	174
Audience	3	FOSTech	TourPar IP Hex	9	4	183
Audience	3	Showtec	Titan Strobe HTP	3	4	192
Audience	3	Showtec	Titan Strobe HTP	3	4	195
Audience	3	Showtec	Titan Strobe HTP	3	4	198
Audience	3	Showtec	Titan Strobe HTP	3	4	201
Audience	4	FOSTech	Helix Pro 35ch	35	5	001
Audience	4	FOSTech	Helix Pro 35ch	35	5	036
Audience	4	FOSTech	Helix Pro 35ch	35	5	071
Audience	4	FOSTech	Helix Pro 35ch	35	5	106
Audience	4	FOSTech	Helix Pro 35ch	35	5	141
Audience	4	FOSTech	Helix Pro 35ch	35	5	176
Audience	4	FOSTech	Helix Pro 35ch	35	5	211
Audience	4	FOSTech	Helix Pro 35ch	35	5	246