



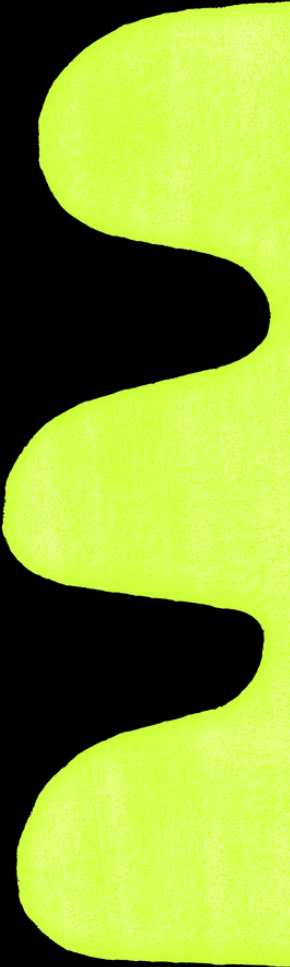
Esitystekniikka Venue Tech

Tavara-asema

**Tavara
asema**

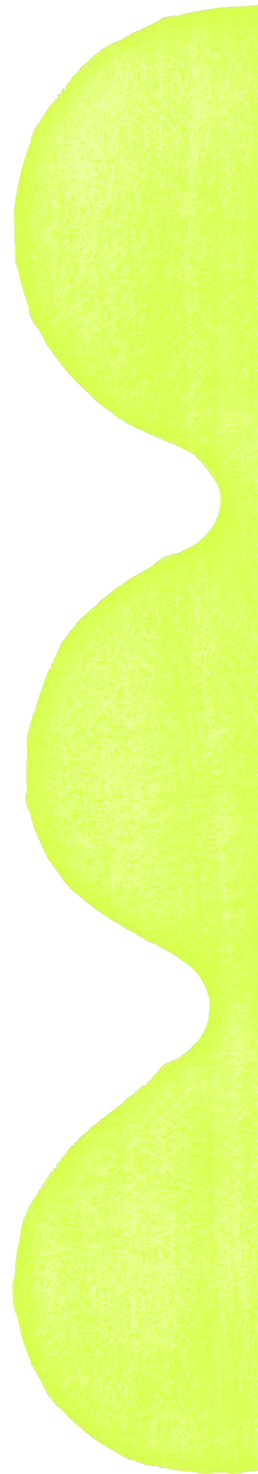
Ratapihankatu 33, 33100 Tampere

www.tavara-asema.fi
@tavaraasematre



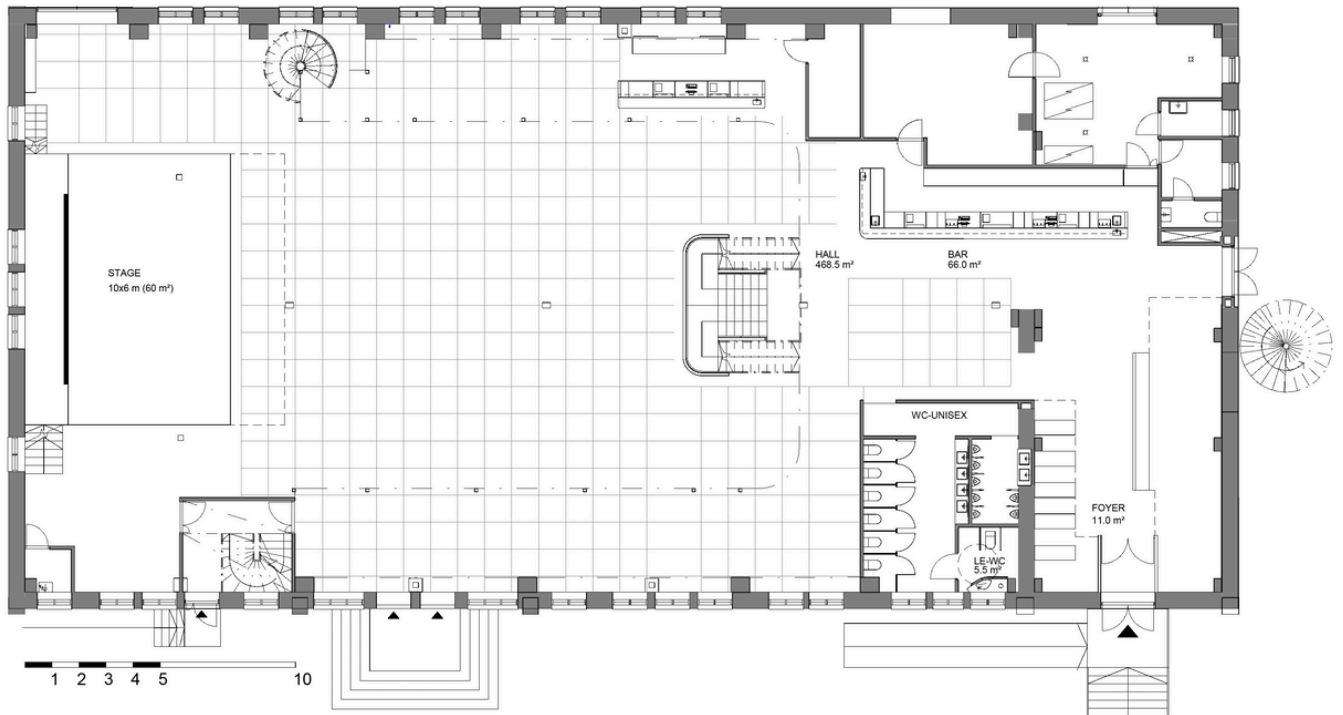
SISÄLTÖ / Contents

Mitat / Measurements	2
Ääni / Audio	3
Valot / Lights	4
Muuta / Other	5
Flown Plot Heads	6
Flown Plot DMX	7
Valot – Lava / Lights – Stage	8
Valot – Sali / Lights – Audience	9



MITAT / Measurements

- Lavan koko: 10 x 6-8 m, korkeus 100 cm / Stage dimensions: 10 x 6-8 m, height 100 cm
- Lastausovet / Loading doors: 2800 x 3400 cm
- Lastauslaiturin korkeus / Loading dock height: +97,5 cm



**Tavara
asema**

Ratapihankatu 33, 33100 Tampere

www.tavara-asema.fi
[@tavaraasematre](https://www.instagram.com/tavaraasematre)

ÄÄNI / Audio

Saliääni/FOH

- 1x Yamaha CL5
- 2x Yamaha RIO3224-D2
- 5x NEXO GeoM 12 / side
- 4x NEXO RS18
- 4x NEXO ID24-T (front fills)
- 4x NEXO ID24-T (delays)

Lavaääni/Stage audio

- 1x Yamaha CL5
- 1x Yamaha RIO3224-D2
- 7x NEXO P15 + cue
- 1x NEXO P15 / side (side fill)
- 2x NEXO L18 / side (side fill)

Signaalinjakelu/ Signal Distribution

- Analog split 48ch (4 x 12ch Stagebox)
- 8x Cat6A
- 8x fiber, single mode UPC
- 4x fiber, multi mode
- 2x Sonible ml:mio (BNC Madi -> fiber)

Mikrofonit ja DI-boxit/ Microphones & DI boxes

- 8x Shure SM58
- 8x Shure SM57
- 2x Shure Beta52A
- 3x Shure Beta91A
- 2x Shure SM94
- 3x Shure SM58 Beta A
- 1x Shure SM57 Beta A
- 1x Shure KSM8
- 1x Shure 55SH
- 3x Audix OM6
- 1x Audix OM7
- 1x Audix VX-5
- 2x Audix D6
- 1x Audix i5
- 1x EV RE20
- 4x Audio-Technica AE3000
- 4x Sennheiser e614
- 11x Sennheiser e604
- 4x Sennheiser e906
- 4x Radial Engineering ProD2
- 4x Radial Engineering Pro48
- Additional DI-Boxes etc.

Langattomat laitteet / Wireless Devices

- 2x Sennheiser EW-DX e935
- handheld microphone
- 2x Sennheiser EW-DX HSP4 headset

VALOT / Lights

Valo-ohjain/Console

1x Chamsys MQ250M Stadium

Art-Net

2 x Showtec Artnet Node 8/3

Lava/Stage

- 8x Clay Paky Axcor Spot 400
- 12x Chauvet Rogue R2X Wash
- 12x Showtec Stage Blinder 2 Blaze
- 4x Martin Atomic LED
- 8x ADJ FR150Z
- 6x Colorado 1 Tri-Tour LED Par (side)
- MDG ATMe
- Concept Smoke "peasoup" Hazer
- ADJ Unique

Tanssilattia/Salin tunnelmavaalaistus Dance Floor/Atmospheric Lighting

- 8x FOS Helix Pro
- 4x Clay Paky B-Eye K20cc
- 8x FOS Scorpio Spot
- 4x Showtec Titan Strobe
- 3x FOS Touring PAR IP HEX

MUUTA / Other

Lavan takana oleva LED-näyttö/Stage LED screen

- Mightary RC Indoor 2.6 mm
- size 5,5 x 3,5 m
- native resolution 2112 x 1344 px
- brightness 900 nits
- Resolume Arena media server
- Blackmagic Design DeckLink Mini Recorder 4K

Matriisimikseri/Matrix Mixer

- 1x Yamaha MRX7

DJ-laitteet/DJ equipment

- 2 x CDJ2000NXS2
- DJM900NXS2

Kabinetin kokous-tekniikka/Cabinet conference tech

- 1x Sony Pro 40 65"
- 2x Genelec 4420A
- 1x BenQ Instashow

Sähkö/Power supply

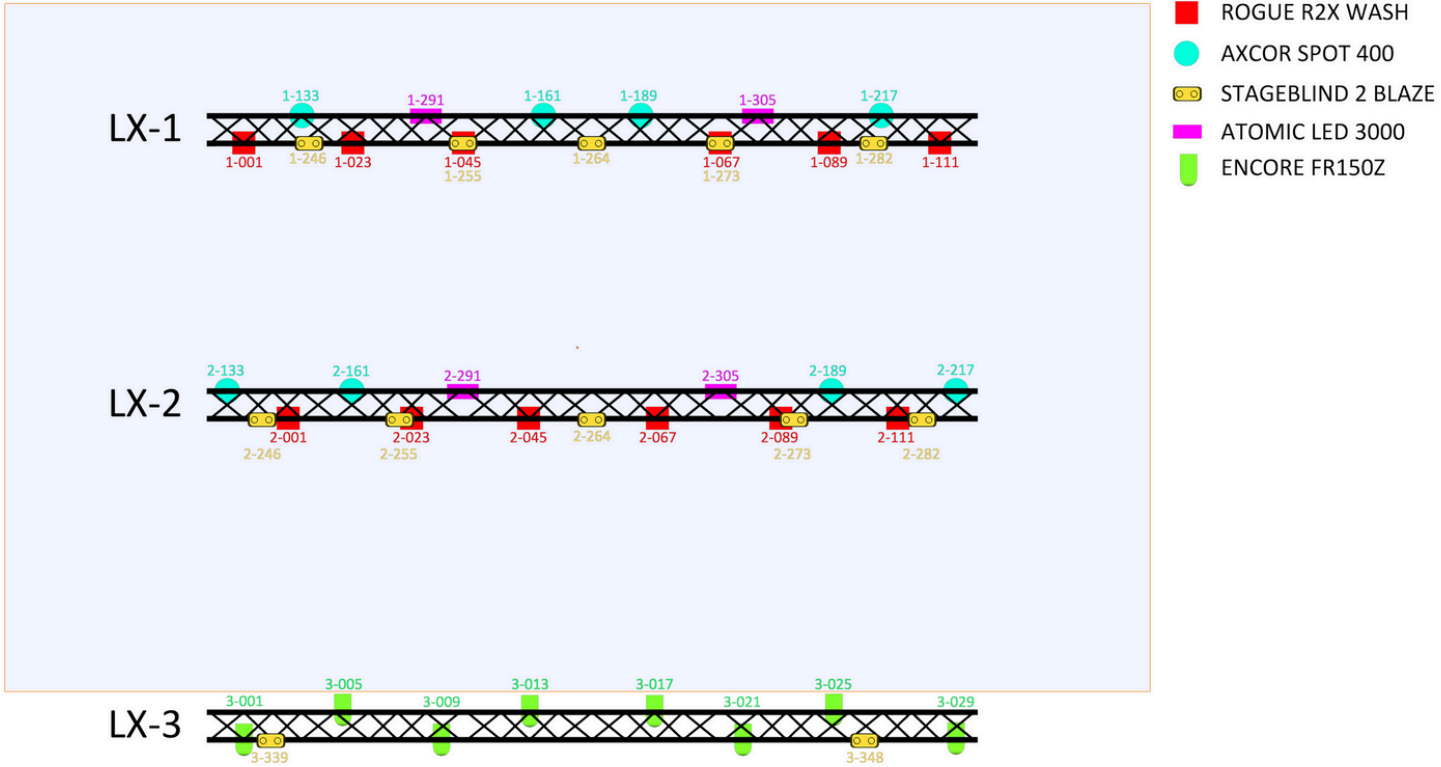
- 2x 63A
- 2x 32A
- 2x 16A
- Additional 4x 16A to the sides of the main floor

Internet

- Optical fiber 1GB/1GB
- Wireless LAN network
- throughout the building
- Ethernet access available

FLOWN PLOT

TA FLOWN PLOT STAGE



VALOT - LAVA / Lights - Stage

STAGE						
LOCATION	UNI	ARTNET	MANUFACTURER	HEAD TYPE	CH MODE	DMX
LX1	1	0	Chauvet	Rogue R2X Wash	22	001
LX1	1	0	Chauvet	Rogue R2X Wash	22	023
LX1	1	0	Chauvet	Rogue R2X Wash	22	045
LX1	1	0	Chauvet	Rogue R2X Wash	22	067
LX1	1	0	Chauvet	Rogue R2X Wash	22	089
LX1	1	0	Chauvet	Rogue R2X Wash	22	111
LX1	1	0	Clay Paky	Axcor Spot 400	28	133
LX1	1	0	Clay Paky	Axcor Spot 400	28	161
LX1	1	0	Clay Paky	Axcor Spot 400	28	189
LX1	1	0	Clay Paky	Axcor Spot 400	28	217
LX1	1	0	Showtec	StageBlind 2 Blaze	9	246
LX1	1	0	Showtec	StageBlind 2 Blaze	9	255
LX1	1	0	Showtec	StageBlind 2 Blaze	9	264
LX1	1	0	Showtec	StageBlind 2 Blaze	9	273
LX1	1	0	Showtec	StageBlind 2 Blaze	9	282
LX1	1	0	Martin	Atomic LED 3000	14	291
LX1	1	0	Martin	Atomic LED 3000	14	305
LOCATION	UNI	ARTNET	MANUFACTURER	HEAD TYPE	CH MODE	DMX
LX2	2	1	Chauvet	Rogue R2X Wash	22	001
LX2	2	1	Chauvet	Rogue R2X Wash	22	023
LX2	2	1	Chauvet	Rogue R2X Wash	22	045
LX2	2	1	Chauvet	Rogue R2X Wash	22	067
LX2	2	1	Chauvet	Rogue R2X Wash	22	089
LX2	2	1	Chauvet	Rogue R2X Wash	22	111
LX2	2	1	Clay Paky	Axcor Spot 400	28	133
LX2	2	1	Clay Paky	Axcor Spot 400	28	161
LX2	2	1	Clay Paky	Axcor Spot 400	28	189
LX2	2	1	Clay Paky	Axcor Spot 400	28	217
LX2	2	1	Showtec	StageBlind 2 Blaze	9	246
LX2	2	1	Showtec	StageBlind 2 Blaze	9	255
LX2	2	1	Showtec	StageBlind 2 Blaze	9	264
LX2	2	1	Showtec	StageBlind 2 Blaze	9	273
LX2	2	1	Showtec	StageBlind 2 Blaze	9	282
LX2	2	1	Martin	Atomic LED 3000	14	291
LX2	2	1	Martin	Atomic LED 3000	14	305
LOCATION	UNI	ARTNET	MANUFACTURER	HEAD TYPE	CH MODE	DMX
LX3	3	2	ADJ	Encore FR150z	4	001
LX3	3	2	ADJ	Encore FR150z	4	005
LX3	3	2	ADJ	Encore FR150z	4	009
LX3	3	2	ADJ	Encore FR150z	4	013
LX3	3	2	ADJ	Encore FR150z	4	017
LX3	3	2	ADJ	Encore FR150z	4	021
LX3	3	2	ADJ	Encore FR150z	4	025
LX3	3	2	ADJ	Encore FR150z	4	029
LX3	3	2	Showtec	StageBlind 2 Blaze	9	339
LX3	3	2	Showtec	StageBlind 2 Blaze	9	348
LOCATION	UNI	ARTNET	MANUFACTURER	HEAD TYPE	CH MODE	DMX
STAGE USR	3	2	MDG	ATMe	3	510
STAGE DSL	8	7	Concept Smoke	HAZER	1	500
STAGE DSL	8	7	ADJ	CYCLONE	1	501
SL	8	7	Chauvet Pro	Colorado 1-Tri Tour	10	001
SL	8	7	Chauvet Pro	Colorado 1-Tri Tour	10	011
SL	8	7	Chauvet Pro	Colorado 1-Tri Tour	10	021
SR	3	2	Chauvet Pro	Colorado 1-Tri Tour	10	101
SR	3	2	Chauvet Pro	Colorado 1-Tri Tour	10	111
SR	3	2	Chauvet Pro	Colorado 1-Tri Tour	10	121



Ratapihankatu 33, 33100 Tampere

www.tavara-asema.fi
@tavaraasematre

VALOT - SALI / Lights - Audience

AUDIENCE						
LOCATION	UNI	ARTNET	MANUFACTURER	HEAD TYPE	CH MODE	DMX
AUDIENCE	4	3	FOSTech	Scorpio Spot Vector	16	001
AUDIENCE	4	3	FOSTech	Scorpio Spot Vector	16	017
AUDIENCE	4	3	FOSTech	Scorpio Spot Vector	16	033
AUDIENCE	4	3	FOSTech	Scorpio Spot Vector	16	049
AUDIENCE	4	3	FOSTech	Scorpio Spot Vector	16	065
AUDIENCE	4	3	FOSTech	Scorpio Spot Vector	16	081
AUDIENCE	4	3	FOSTech	Scorpio Spot Vector	16	097
AUDIENCE	4	3	FOSTech	Scorpio Spot Vector	16	113
AUDIENCE	4	3	FOSTech	TourPar IP Hex	9	129
AUDIENCE	4	3	FOSTech	TourPar IP Hex	9	138
AUDIENCE	4	3	FOSTech	TourPar IP Hex	9	147
AUDIENCE	4	3	Showtec	Titan Strobe HTP	3	156
AUDIENCE	4	3	Showtec	Titan Strobe HTP	3	159
AUDIENCE	4	3	Showtec	Titan Strobe HTP	3	162
AUDIENCE	4	3	Showtec	Titan Strobe HTP	3	165
AUDIENCE	4	3	Clay Paky	B-Eye K20cc	21	168
AUDIENCE	4	3	Clay Paky	B-Eye K20cc	21	189
AUDIENCE	4	3	Clay Paky	B-Eye K20cc	21	210
AUDIENCE	4	3	Clay Paky	B-Eye K20cc	21	231
AUDIENCE	5	4	FOSTech	Helix Pro 35ch	35	071
AUDIENCE	5	4	FOSTech	Helix Pro 35ch	35	106
AUDIENCE	5	4	FOSTech	Helix Pro 35ch	35	141
AUDIENCE	5	4	FOSTech	Helix Pro 35ch	35	176
AUDIENCE	5	4	FOSTech	Helix Pro 35ch	35	211
AUDIENCE	5	4	FOSTech	Helix Pro 35ch	35	246
RESOLUME						
LOCATION	UNI	ARTNET	MANUFACTURER	HEAD TYPE	CH MODE	DMX
SCREEN	6	5	RESOLUME	MASTER INTENSITY	1	050
SCREEN	6	5	RESOLUME	LAYER 1	1	001
SCREEN	6	5	RESOLUME	LAYER 2	1	002
SCREEN	6	5	RESOLUME	LAYER 3	1	003
SCREEN	6	5	RESOLUME	LAYER 4	1	004
SCREEN	6	5	RESOLUME	LAYER 5	1	005
SCREEN	6	5	RESOLUME	LAYER 6	1	006
SCREEN	6	5	RESOLUME	LAYER 7	1	007
SCREEN	6	5	RESOLUME	LAYER 8	1	008